

MEB Firmware Upgrade Instructions

****This is only for XPort05 only (P/N 4370429-10)****

Software Download

In order to download the firmware, the Lantronix Device Installer Software needs to be downloaded. It may be obtained at <http://www.lantronix.com/device-networking/utilities-tools/device-installer.html>.

MEB Board Location

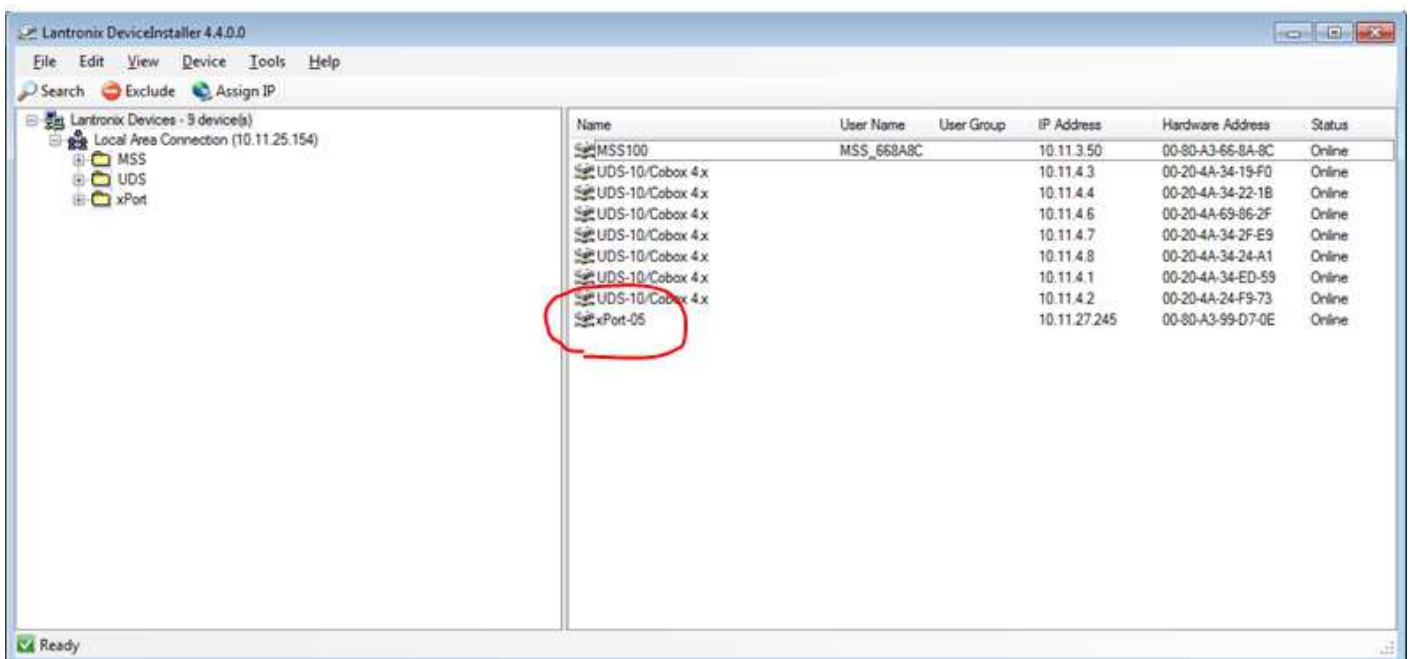


Figure 1 Device Installer Start Screen

From the Device Installer start screen (Figure 1 Device Installer Start Screen) click on the XPort folder in the left pane. This will cause only XPort devices to display. **Make sure that your computer and the power supply are both connected to your network.** If you have more than one MEB connected, (as is the case in this example) you can confirm that your MEB has been found by checking the MAC address.

Once the correct MEB has been located, click on it in the right pane to select it before proceeding to the next step.

MEB Upgrade Process

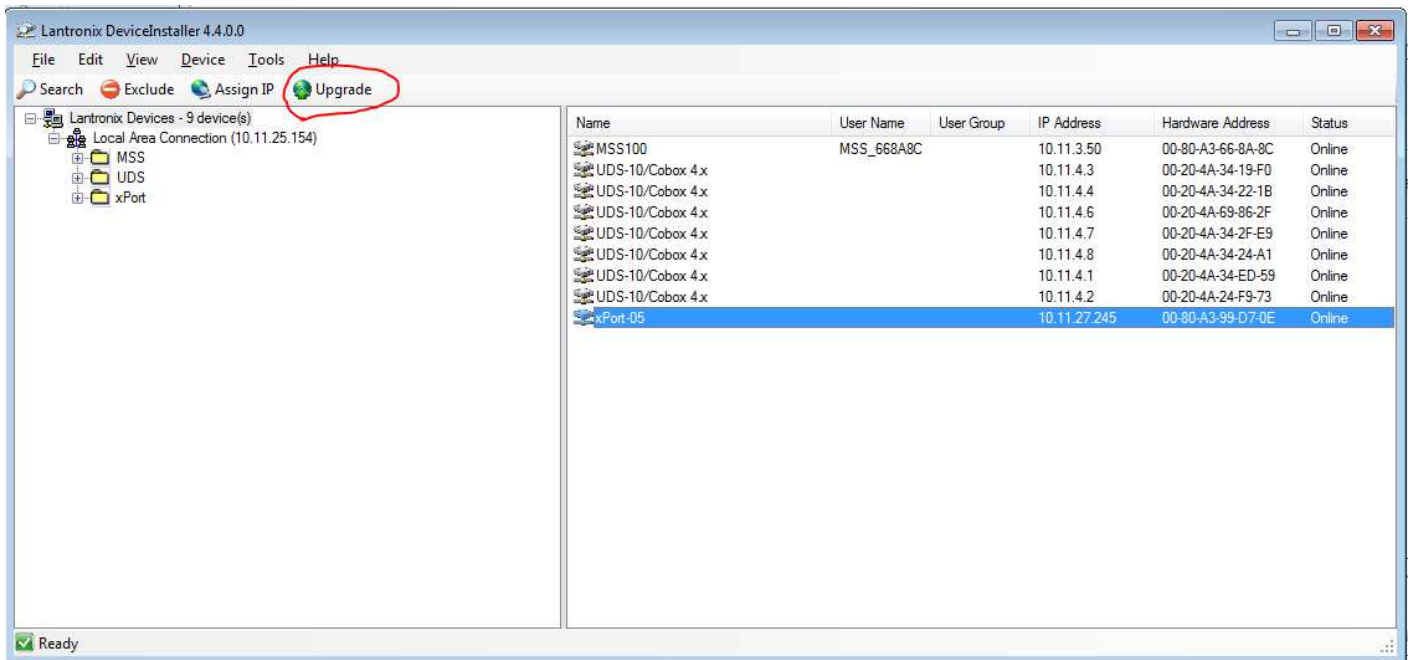


Figure 2 Location of Upgrade Button

Once the MEB is highlighted, an Upgrade button will appear as in Figure 2. Press this button.

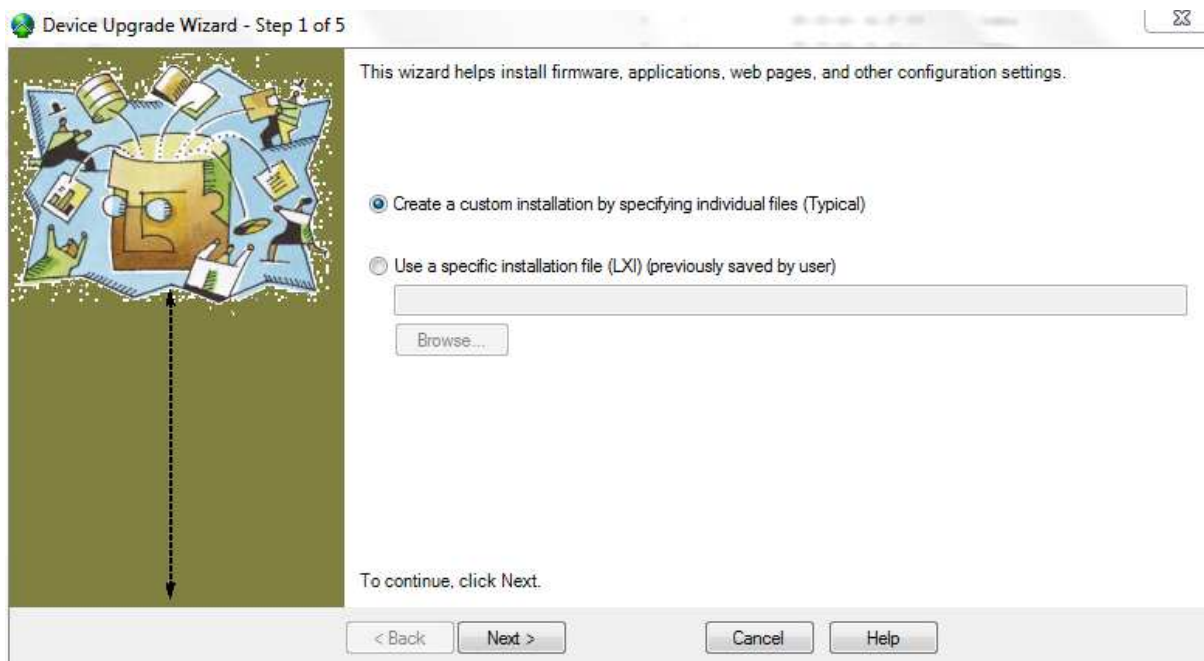


Figure 3 Step 1 of Upgrade Wizard

The window in Figure 3 will appear. Hit the Next button.

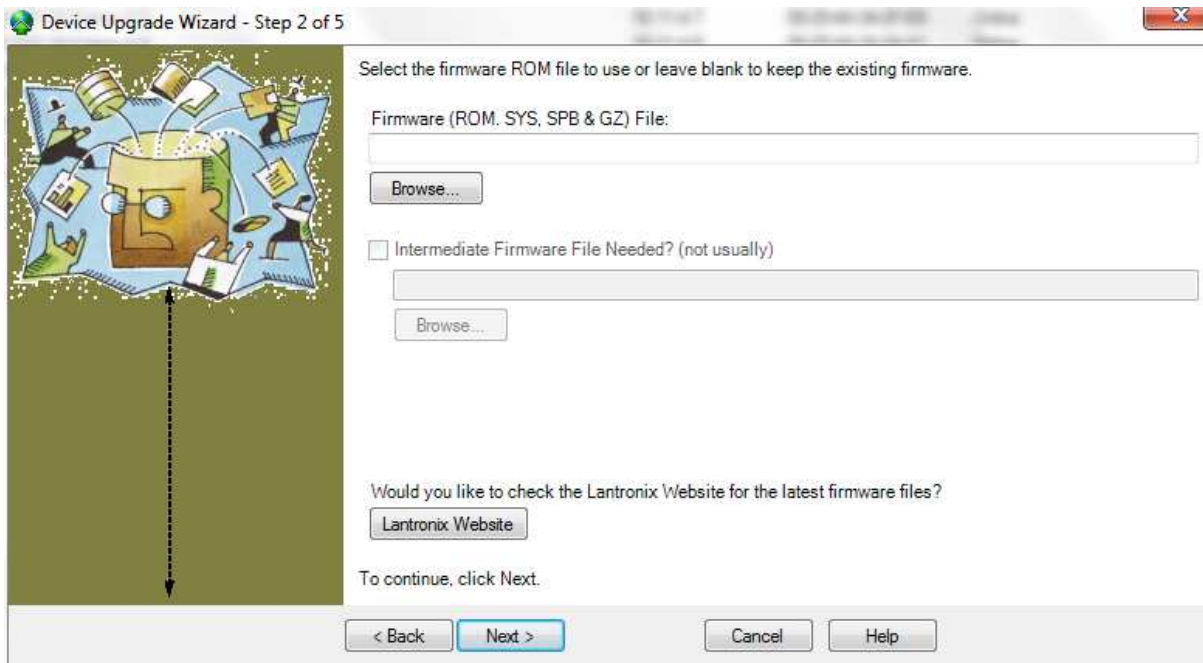


Figure 4 Step 2 of Upgrade Wizard

The window in Figure 4 will appear. Hit the Browse button to select the *.rom file to load. Then hit the Next button.



Figure 5 Step 3 of Upgrade Wizard

If the web pages are going to be updated as well, then select
“Install files contained in COB partitions.” If not, then keep the selection at “No other files to install (typical)”.

In either case, hit the Next button.

Setting COB Partition

If you are not updating the web pages, then please skip to the next section.

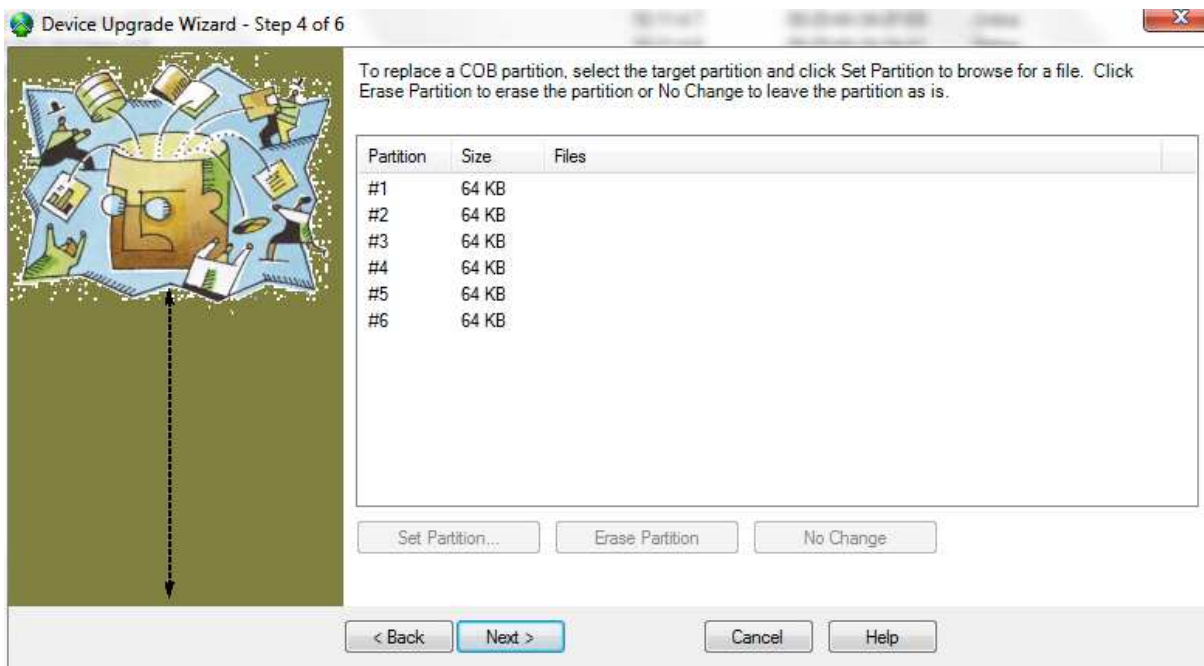


Figure 6 Setting COB Partition

The window in Figure 6 should appear for setting the cob partition. Using the mouse, select partition 1 by left-clicking on it.

Then press the “Set Partition” button.

A warning message box may appear. This warning can be safely ignored.

From here, select the *.cob file and press the next button.

Programming of Firmware



Figure 7 Final Window Before Upgrade

When the window of Figure 7 appears, just hit the Next button.

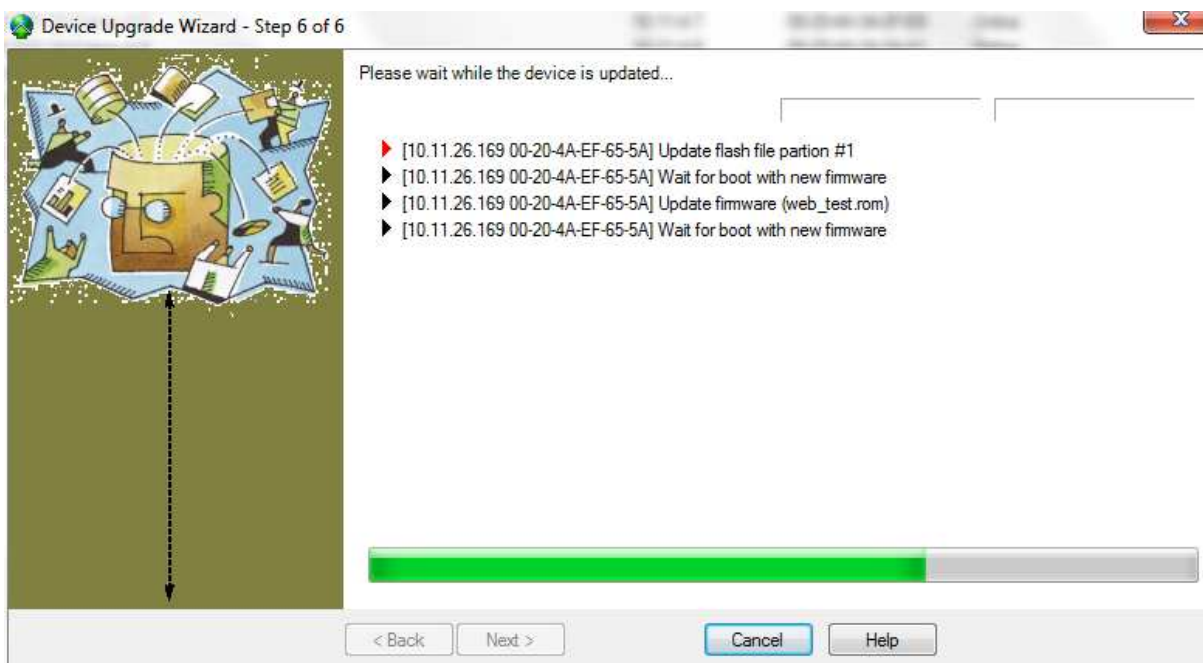


Figure 8 Update Status Window

Figure 8, is the window that appears while the upgrade is occurring. At the end of it, the close button may be pressed.

Updating Setup Records

Boot up the Lantronix DeviceInstaller again and press the upgrade button for the same unit like before.

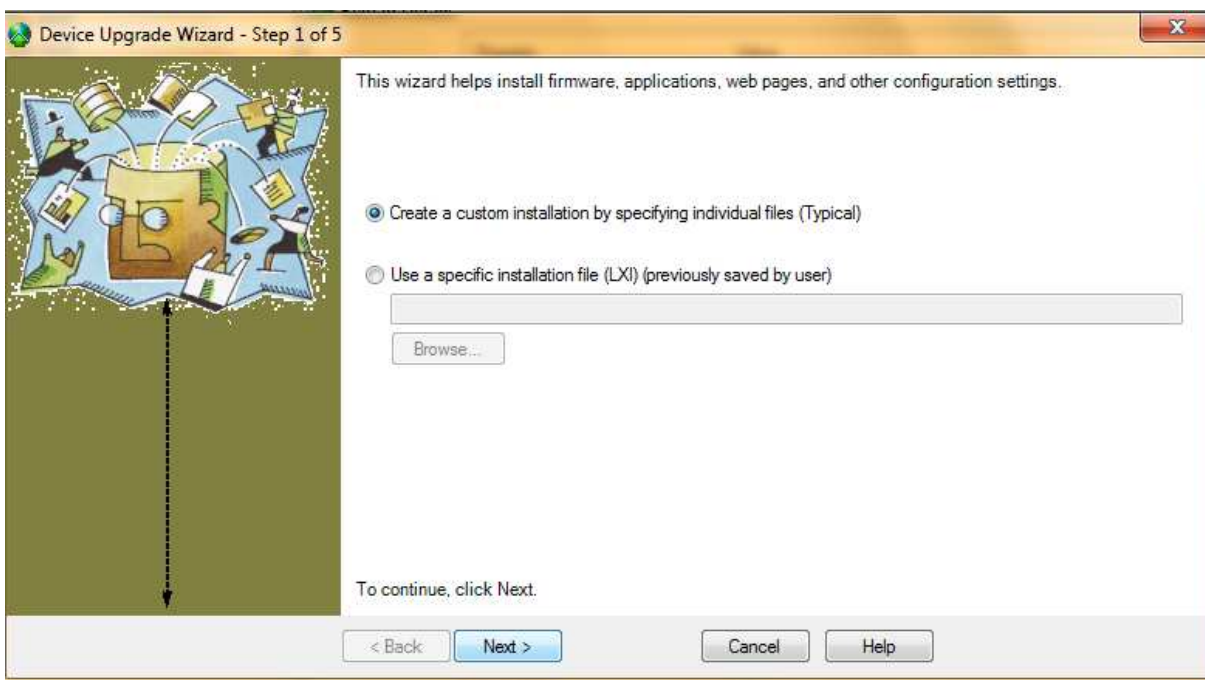


Figure 9 Step 1 of Upgrade Wizard

Click next.

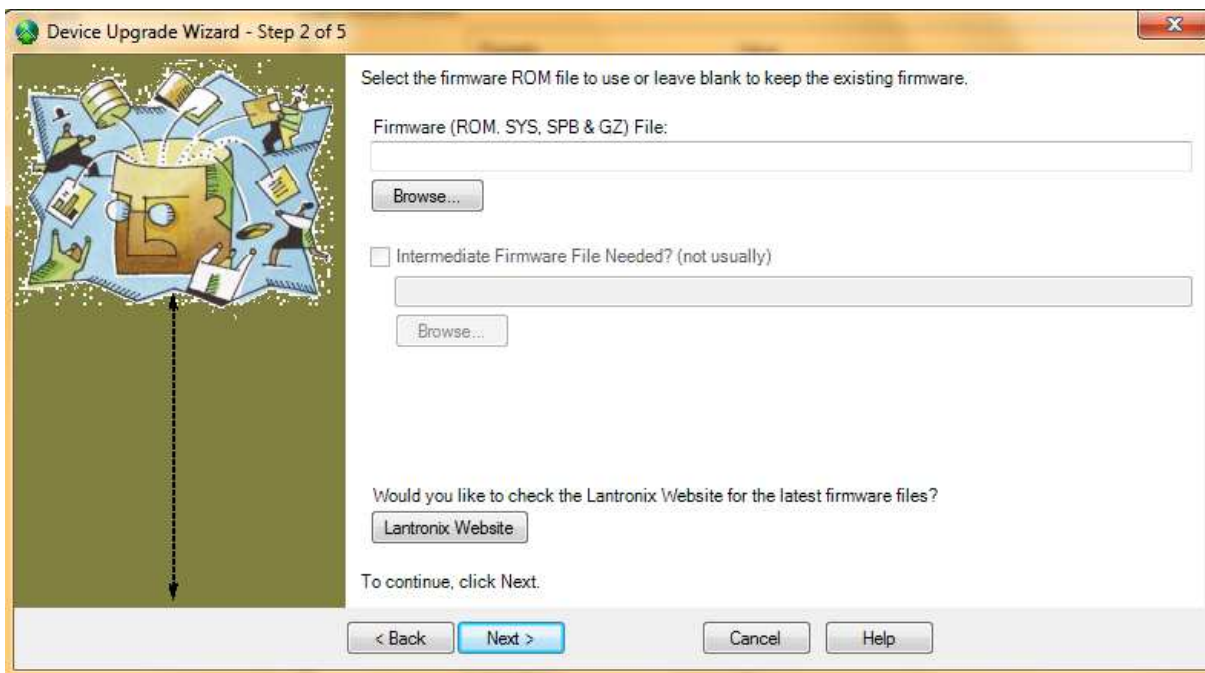


Figure 10 Step 2 of Upgrade Wizard

Click Next.

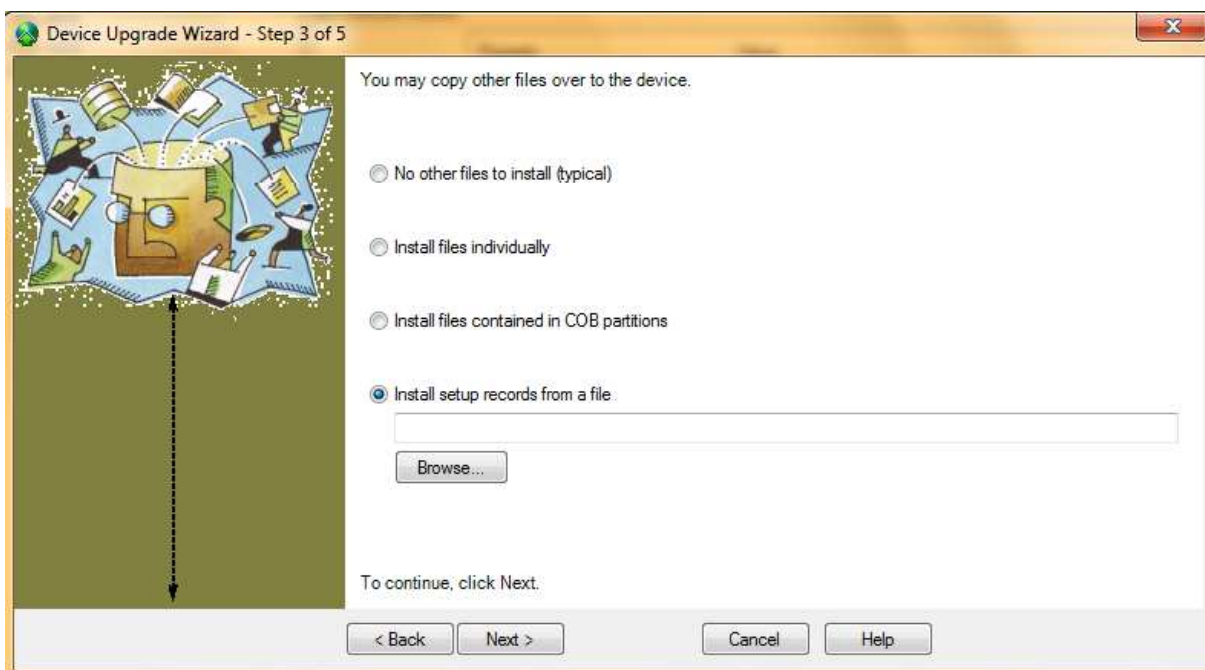


Figure 11 Step 3 of Upgrade Wizard

Click browse and choose the .REC file I provided. Then click next.

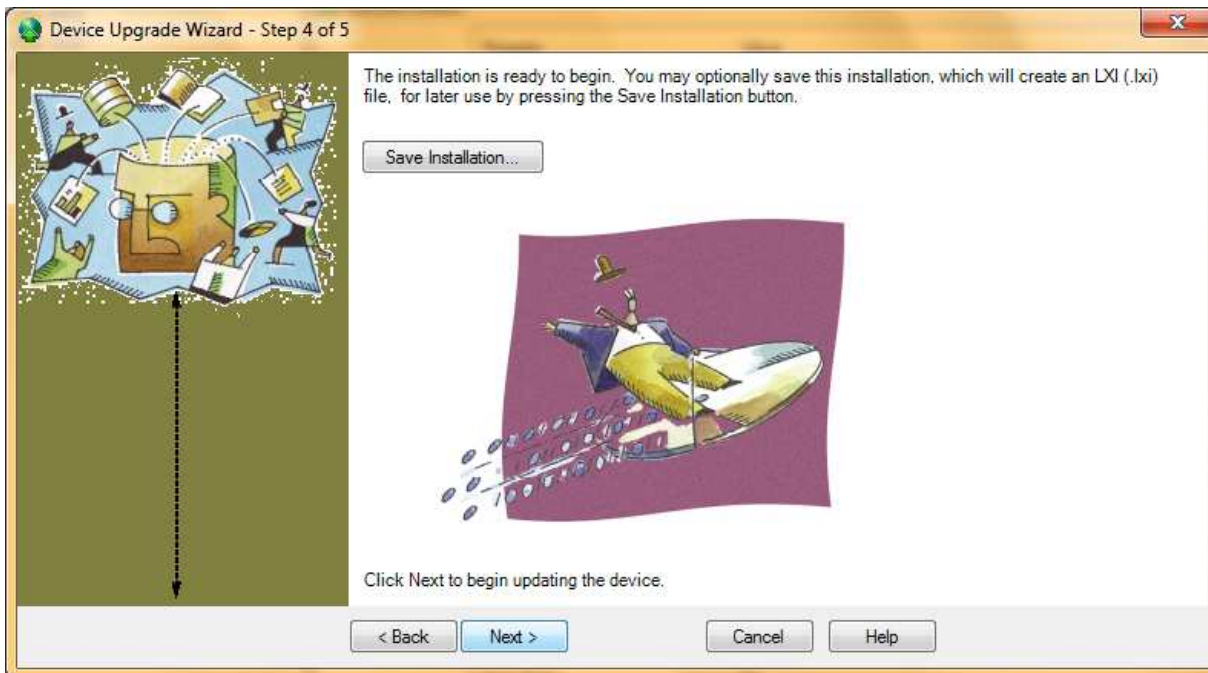


Figure 12 Step 4 of Upgrade Wizard

Click Next.

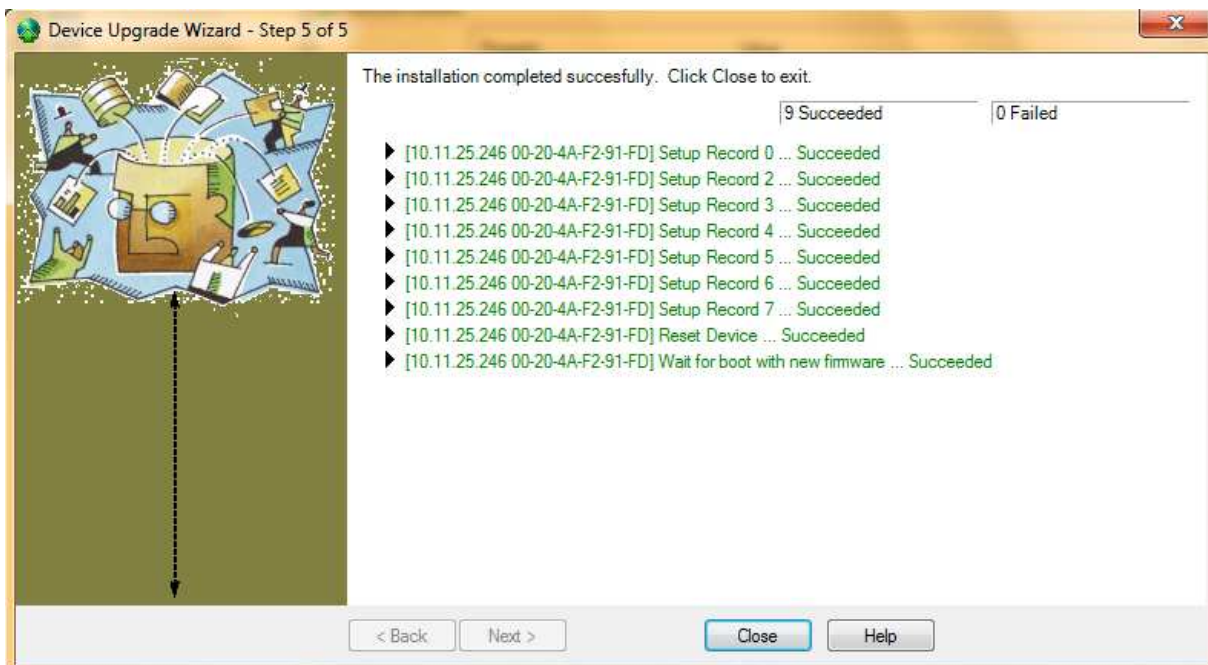


Figure 13 Step 5 of Upgrade Wizard

After all the steps in upgrade have succeeded, click close.

Power cycle the unit. You will no longer need to use the Lantronix DeviceInstaller.